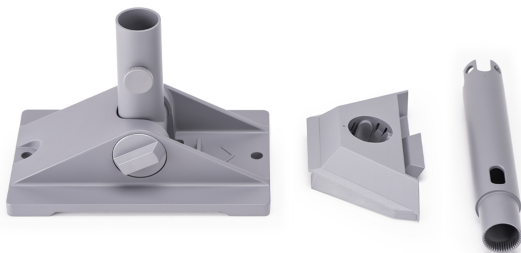




Starlink Mini Pivot Mount

Model No: STARLINK-MINI-PIV-MT



Price:

Rs. 14,800

Warranty:

1 Years(s) manufacturer warranty.

1 Year Manufacturer Warranty. Warranty Covers Defects In Materials And Workmanship Of The Device. Warranty Begins From The Date Of Purchase. Warranty Does Not Cover Damage

Due To Improper Installation, Normal Wear And Tear, Weather Or Accidental Damages, Self-Repairs, Modifications, Or Unauthorized Use.

Delivery:

Pre-Order Only - Starlink / Free Delivery

- You Can Purchase This Product As A Pre-Order Transaction Using The "Pre-Order/Order Now" Option.
- Delivery Of Pre Orders Will Commence From The 20th Of September 2025.
- **Free Delivery Until Further Notice.**
- **Terms And Conditions:**
 - **By pre-ordering, I acknowledge and agree to the following:**
 - Orders will be considered final and binding only after a designated sales representative contacts me. I anticipate a call within 48 hours to confirm my order.
 - I understand that this is a limited stock offer, and availability is subject to the initial stock allocation. Orders will be fulfilled based on a first-come, first-served basis, and product availability may be limited.
 - I acknowledge that the product will be sold exclusively to customers who have reserved/paid their units in advance.
 - Pre-ordering entitles me to the priority purchase of the specified product model in the chosen color and quantity.
 - I am aware that the pre-order payment is subject to the product's retail price and any applicable taxes and shipping fees.
 - I authorize SINGER SL to charge my selected payment method for the pre-order amount.
 - I agree that SINGER SL reserves the right to cancel any pre-order due to unforeseen circumstances, including but not limited to product unavailability, manufacturing issues, or force majeure events. In such cases, I will be provided with a full refund.
 - Products cannot be returned unless it is for manufacturing defects after delivery.

Specifications:

- :Type: Pivot Mount
- :Compatibility: Starlink Mini
- :Kit Contents: Pivot Mount, 2x Sealant Tape Squares, 2x Sealant Tape Strips, 2x Lag Screws, 20x Cable Routing Clips
- :Recommended Tools: Drill, 6 mm (1/4 in) Drill Bit, 9/16 in Hex Socket, Marker, Level
- :support.starlink.com Package Weight: 1.8 kg (4.0 lbs)
- :Package Dimensions: 270 x 360 x 95 mm (10.6 x 14.2 x 3.7 in)
- :Dimensions: 140 x 311 x 223 mm / 90°
- :More About: The Starlink Mini Pivot Mount is perfect for installation on slanted, shingled roofs. Designed for ease of use and flexibility, the Pivot Mount swiveling mechanism enables effortless fine-tuning, adapting to various angles and directions, thus maximizing

the performance of your Starlink. Crafted from durable, weather-resistant materials, the mount ensures a sturdy and enduring foundation for your Starlink, capable of withstanding various environmental conditions. Its elongated design allows for greater flexibility in positioning, enabling easy alignment and adjustment to maximize signal reception. The Pivot Mount is engineered for easy installation and is accompanied by all necessary hardware and user-friendly instructions, ensuring a hassle-free setup process.

Date: 2025-10-01 12:46